

All-in-One AP/PxP/CPE

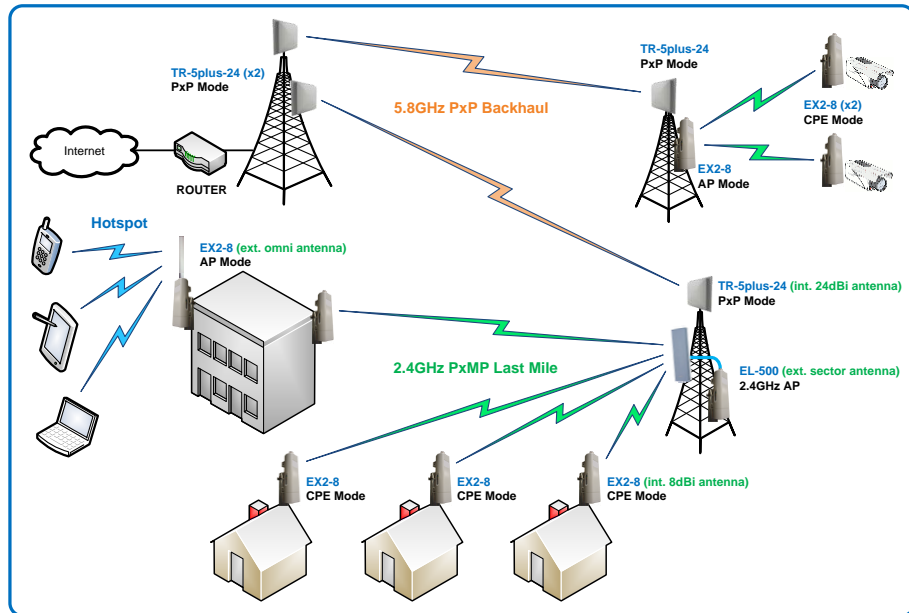
Tranzeo's new **EX2** series of wireless LAN products are **IEEE 802.11b/g/n** compliant, operate in the license-free **2.4GHz** frequency band, and support data rates of up to **150 Mbps**. The versatile multi-mode design supports both AP and CPE modes, as well as WDS AP Repeater and Bridge modes. It also features advanced networking and management capabilities including WEP/WPA/WPA2 security, WMM QoS, and NAT Routing.

The compact **EX2-8** design features an integrated **8dBi** directional panel antenna and a high performance radio with up to **+26dBm** output power. An N-Type connector is also available for applications requiring an external antenna. The all-in-one design comes complete with a passive PoE injector and DC adaptor, requiring a single CAT5 cable for power and data, yielding the lowest cost of ownership.

The **EX2-8** also features a weather-resistant enclosure that is compliant with the IP65 environmental standards, requiring minimal installation and maintenance costs in conditions ranging from -20 oC to +70 oC. The **EX2** family of products are also backed by a **1-Year Parts and Labor Warranty** and Tranzeo's unparalleled **Lifetime Technical Support** for worry-free network operation.

Applications

- Remote Data Acquisition
- Internet Service
- Video Transmission
- Security and Surveillance
- Private Networks
- WiFi Hot Spots



Key Features

- IEEE 802.11b/g/n Compliant
- AP/CPE/Bridge/Repeater Modes
- Up to 150 Mbps Data rate
- Up to +26dBm Transmit Power with Adjustable Output
- Integrated 8dBi Panel Antenna with Alignment LED's
- Software Selectable External N-Type Antenna Connector
- WEP/WPA/WPA2 Security, and WMM QoS
- NAT Routing, VPN-Pass-Through
- TCP/IP, UDP, DHCP, WDS, STP, Telnet, FTP, SNMP
- Power-over-Ethernet (PoE)
- Easy to Install All-In-One Unit
- Web-based Management Tools
- Remote Firmware Upgrade

About Tranzeo Wireless Technologies™

Tranzeo Wireless Technologies Inc. (TSX:TZT) leads the wireless broadband industry for value, by producing high-performance wireless network equipment with a low cost of ownership and unparalleled service allowing communities and businesses to communicate without boundaries. Since the company's inception in 2000, Tranzeo's optimum cost effectiveness, premium quality and responsive support have attracted a growing number of devoted dealers and distributors worldwide.

Tranzeo Wireless Technologies Inc.

19473 Fraser Way, Pitt Meadows, BC, Canada V3Y 2V4 • T: 604.460.6002 • F: 604.460.6005 • Toll Free: 1.866.872.6936 • www.tranzeo.com

Radio Interface and Model Information						
Standards	IEEE 802.11b/g/n					
Radio Mode(s)	Access Point (AP), AP Repeater (WDS), Bridge (WDS), and Customer Premise Equipment (CPE)					
Frequency Range	2402 – 2482 MHz					
Channel Bandwidths	802.11b/g	20 MHz				
	802.11n	20MHz, 40MHz				
Average Transmit Power	802.11b	11Mbps	+26 dBm			
		6-24Mbps	+26 dBm			
	802.11g	36-48Mbps	+25 dBm			
		54Mbps	+24 dBm			
Average Transmit Power	802.11n	MCS	HT20	HT40		
		0-3	+26 dBm	+26 dBm		
		4	+25 dBm	+25 dBm		
		5	+24 dBm	+23 dBm		
		6	+23 dBm	+22 dBm		
Output Power Control	Full, 50%, 25%, 12.5%, Min.					
	802.11b	-93dBm @ 1Mbps				
Minimum Receiver Sensitivity	802.11g	-73dBm @ 54Mbps				
	802.11n	-88dBm @ HT20/MSC0, -84dBm @ HT40/MSC0, -70dBm @ HT20/MSC7, -67dBm @ HT40/MSC7				
Modulation	64-QAM, 16-QAM, QPSK, BPSK, DBPSK, DQPSK, CCK					
Data Rates	802.11b	11, 5.5, 2, 1 Mbps				
	802.11g	54, 48, 36, 24, 18, 12, 9, 6 Mbps				
	802.11n	150, 135, 130, 121.5, 117, 108, 104, 81, 78, 65, 58.5, 54, 53, 40.5, 39, 27, 26, 19.5, 13.5, 13, 6.5, 6 Mbps				
Receive Signal Strength	Receive Signal Strength LED's for Antenna Alignment					
Antenna Configuration	1 x 1					
Antenna Options and Model Information						
Model No.	Type	Polarization	Wind Load (N)		Beamwidth	
			100 mph	125 mph	Horizontal	Vertical
EX2-8 ⁽¹⁾ (software selectable antenna switch)	+8dBi Panel Antenna (internal)	Vertical	13	20	113°	39°
	N-Male Connector (external)	N/A	13	20	N/A	N/A
Networking and Management						
Device Management	Cross-Platform Utility, Web-Based Management, Remote Configuration and Firmware Upgrades (via IP), Telnet, FTP, SNMP v1/v2c/v3, Save/Load Settings Profiles					
System Status	Wireless and Ethernet Statistics, Connection Status, Event Log, Remote Syslog Server, Site Survey					
Protocols	TCP/IP, UDP, NAT, STP, DHCP Client/Server/Relay, WDS, VPN Pass-Through, Multiple MAC Bridging					
Quality of Service (QoS)	802.11e WMM					
Security	WEP/WPA/WPA2 (TKIP/AES), MAC Address Filtering (Whitelist/Blacklist), Inter-Station Client Blocking					
Advanced Settings	Radio On/Off, Max Clients, Fragmentation Length, Beacon Interval, RTS/CTS Threshold, DTIM Interval					
Ethernet ⁽²⁾	1 x Autosense 10/100Base-T (RJ-45)					
Electrical Specifications						
Max Power Consumption	11 Watts					
Power Supply	Power over Ethernet (PoE)					
DC Adapter	12VDC/1.25A (100-240VAC~ 50-60Hz, 1.0A), Fixed UL Plug					
Reset Button	Restore factory defaults					
LED Indicators	Power, LAN, Antenna Alignment LED's (3)					
Processor	Atheros AR9002 Family (CPU: AR7240, RF: AR9285)					
Memory	32MB SDRAM, 8MB FLASH					
Mechanical and Environmental						
Dimensions (radio only)	6.50" x 2.40" x 1.35" (165mm x 60mm x 34mm)					
Dimensions (package)	13.40" x 3.75" x 4.35" (340mm x 95mm x 110mm)					
Weight (package)	1.5 lbs (600 g)					
Installation Hardware (included)	PoE Injector, DC adapter, Steel ring clamp for pole-mounting, keyholes for wall-mounting					
Environmental Rating	IP65					
Operating Temperature	-20°C to 70°C					
Storage Temperature	-30°C to 80°C					
Compliance and Warranty						
Export Control	HTC 8517.62.0010, ECL 1-5.A.2.A.1					
Compliance & Approvals	RoHS, FCC Part 15 Class B, Industry Canada, CE EN 300 328, EN 301 489-1/17, EN 60950, EN 50385					
Warranty	1-Year Parts and Labor					

⁽¹⁾ Internal antenna is selected by default. ⁽²⁾ Supports up to 150 ft Cat5e Ethernet cable with supplied 12VDC adapter. Use Tranzeo-approved 18VDC adapter (sold separately) for connecting up to 300 ft Cat5e Ethernet cable. Tranzeo and the Tranzeo logo are registered trademarks of Tranzeo Wireless Technologies Inc. All other trademarks mentioned herein are the property of their respective owners.