

## Advanced All-in-One AP/PxP/CPE

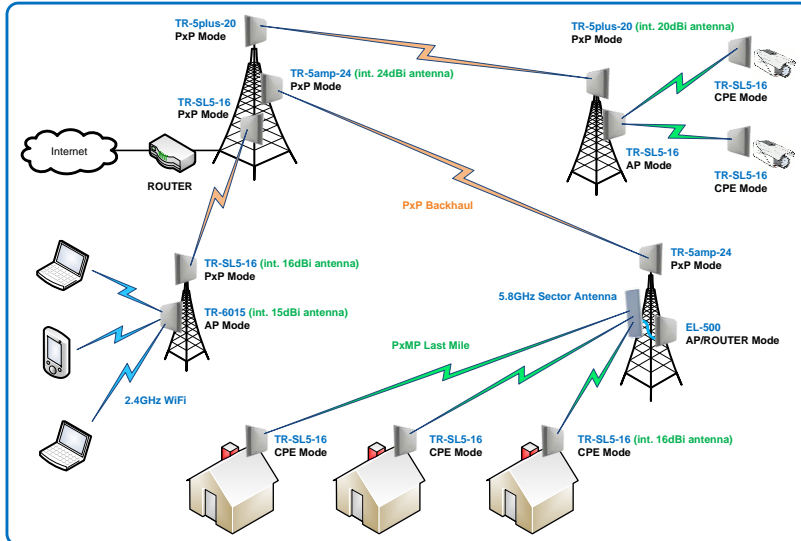
Tranzeo's **TR-SL5-XX-48** series of Tri-Mode outdoor units support -48VDC POE operation. The versatile and low-cost units can be configured as Access Point (AP), Point-to-Point (PxP), or Customer Premise Equipment (CPE), making them suitable for a broad range of applications.

The **TR-SL5** series of products feature high performance radios and advanced networking and management capabilities including NAT Routing, StreamEngine™ QoS, WEP/WPA/WPA2 Security, and Bandwidth Throttling. The all-in-one design features an integrated 16dBi directional panel antenna, and comes complete with POE injector suitable for -48VDC operation, yielding the lowest total cost of ownership (TCO). Also available is a connectorized unit for supporting an external antenna for more demanding applications

The ruggedized weatherproof design meets IP67 and NEMA Type 4X environmental standards, and is ideal for conditions ranging from -65 °C to +60 °C. The **TR-SL5** series is also backed by an industry-leading **5-Year Parts and 3-Year Parts & Labour Warranty** and **Lifetime Technical Support** for worry-free network operation.

## Applications

- Remote Data Acquisition
- Internet Service
- Video Transmission
- Security and Surveillance
- Private Networks
- Point-to-Point Backhaul



## About Tranzeo Wireless Technologies™

Tranzeo Wireless Technologies Inc. (TSX:TZT) leads the wireless broadband industry for value, by producing high-performance wireless network equipment with a low cost of ownership and unparalleled service allowing communities and businesses to communicate without boundaries. Since the company's inception in 2000, Tranzeo's optimum cost effectiveness, premium quality and responsive support have attracted a growing number of devoted dealers and distributors worldwide.

Aperto Networks operates as a wholly owned subsidiary of Tranzeo. Aperto is a leading supplier of wireless broadband, mobile WiMAX and Enterprise VPN solutions using highly versatile and cost-effective carrier-grade WiMAX Forum Certified infrastructure equipment.



a Division of Tranzeo Wireless Technologies, Inc.



## Key Features

- IEEE 802.11a Compliant
- AP/PxP/CPE Modes
- Up to +13dBm Transmit Power with Adjustable Output
- -48VDC PoE Operation
- Selectable 5/10/20MHz Channels
- Bandwidth Throttling
- Built-in StreamEngine™ QoS
- WEP/WPA/WPA2 Security
- TCP/IP, UDP, TFTP, SNMP v2c
- NAT, PPPoE, VPN Pass-through
- Web-based Management Tools
- Remote Firmware Upgrade
- Integrated 16dBi Panel Antenna
- Daylight Visible Alignment LED's for Quick Deployment
- Weatherproof Enclosure

## Tranzeo Wireless Technologies Inc.

19473 Fraser Way, Pitt Meadows, BC, Canada V3Y 2V4 • T: 604.460.6002 • F: 604.460.6005 • Toll Free: 1.866.872.6936 • www.tranzeo.com

Radio Interface					
Standards	IEEE 802.11a				
Frequency Range	5170 – 5875 MHz				
Channel Bandwidths	5MHz, 10MHz, 20MHz (Selectable)				
Radio Mode	Access Point (AP), Point-to-Point (P×P), Customer Premise Equipment (CPE)				
Transmit Power	+13 dBm (max) with Adjustable Output				
Receiver Sensitivity	-73dBm @ 54 Mbps, -85dBm @ 6 Mbps				
Data Rate & Modulation	48/54 Mbps QAM-64, 24/36 Mbps QAM-16, 12/18 Mbps QPSK, 6/9 Mbps BPSK				
Receive Signal Strength	Daylight Visible Alignment LED's and Noise/Receive Levels (dBm)				
Internal Antenna Polarization	Horizontal or Vertical				
Antenna Options and Model Information					
Model No.	Antenna/Connector Type	Wind Load (N)		Beamwidth	
		100 mph	125 mph	Horizontal	Vertical
TR-SL5-N-48	N-Type Female Connector	72	112	N/A	N/A
TR-SL5-16-48	16 dBi Panel (internal)	72	112	17°	17°
Networking and Management					
Device Management	Cross-Platform Utility, Web-Based Management, Remote Configuration and Firmware Upgrades (via IP), TFTP, SNMP v2c (MIB-II, 802.11 MIB, Tranzeo MIB), Import/Export/Save Settings Profiles				
Protocols	TCP/IP, UDP, NAT, DHCP Client/Server, PPPoE, WDS, VPN Pass-Through, Multiple MAC Bridging				
Quality of Service (QoS)	StreamEngine™ QoS				
Bandwidth Management	Bandwidth Throttling (Bridge and Router Modes)				
Security	40/64-bit and 128-bit WEP Encryption, WPA/WPA2 (TKIP/AES), MAC address filtering, Management VLAN				
Ethernet	1 x 10/100Base-T (Water-Tight RJ-45)				
Max DHCP Clients	10				
Power Supply					
Power Consumption <sup>(1)</sup>	4.3 Watts (Idle)				
	5.4 Watts (Full Tx Mode and Max Power)				
Power Supply	Power over Ethernet (PoE)				
Operating Voltage <sup>(2)</sup>	Min	Nominal		Max	
	-35VDC	-48VDC		-60VDC	
Mechanical and Environmental					
Radio Dimensions	10.38" x 8.63" x 3.00" (264mm x 219mm x 76mm)				
Radio Weight	1.75 lbs (0.8 Kg)				
Installation Hardware (included)	48V PoE Injector with Built-in Surge Protection, Ethernet Boot with Weatherproof Gasket, L-Bracket with KEP Nuts and U-Bolt for Pole Mount				
Environmental Rating	IP67 and NEMA Type 4X				
Operating Temperature	-65°C to +60°C				
Storage Temperature	-40°C to +85°C				
Compliance and Warranty					
Export Control	HTC 8517.69.0000, ECCN 5A002 ENC, ECL 1-5.A.2.A.1				
Compliance & Approvals	RoHS, FCC Part 15 Class B, Industry Canada, CEI, EMC: EN 301 489, Safety: EN 60950, Radio: EN 302 213				
DFS Modes	Ofcom (UK), ETSI, FCC, Industry Canada				
Warranty	5-Year Parts / 3-Year Parts and Labour				

<sup>(1)</sup> At -48VDC and with 300-ft Cat5 cable. <sup>(2)</sup> Power source must be fuse protected. Specifications are subject to change without notice. Tranzeo and the Tranzeo logo are registered trademarks of Tranzeo Wireless Technologies Inc. All other trademarks mentioned herein are the property of their respective owners.