

Advanced All-in-One AP/PxP/CPE

Tranzeo's versatile **TR-SL5** series are cost-effective and powerful, and can be configured as an Access Point (AP), Point-to-Point (PxP), or as a Customer Premise Equipment (CPE), making them suitable for a broad range of applications operating in the 5GHz band.

The **TR-SL5** series of products feature high performance radios and advanced networking and management capabilities including NAT Routing, StreamEngine™ QoS, WEP/WPA/WPA2 Security, and Bandwidth Throttling. The all-in-one design features an integrated 16dBi directional panel antenna, yielding the lowest total cost of ownership (TCO). Also available is a connectorized unit for supporting an external antenna for more demanding applications

The ruggedized weatherproof design meets IP67 and NEMA Type 4X environmental standards, and is ideal for conditions ranging from -60 °C to +60 °C. The **TR-SL5** series is also backed by an industry-leading **5-Year Parts and 3-Year Parts & Labour Warranty** and **Lifetime Technical Support** for worry-free network operation.

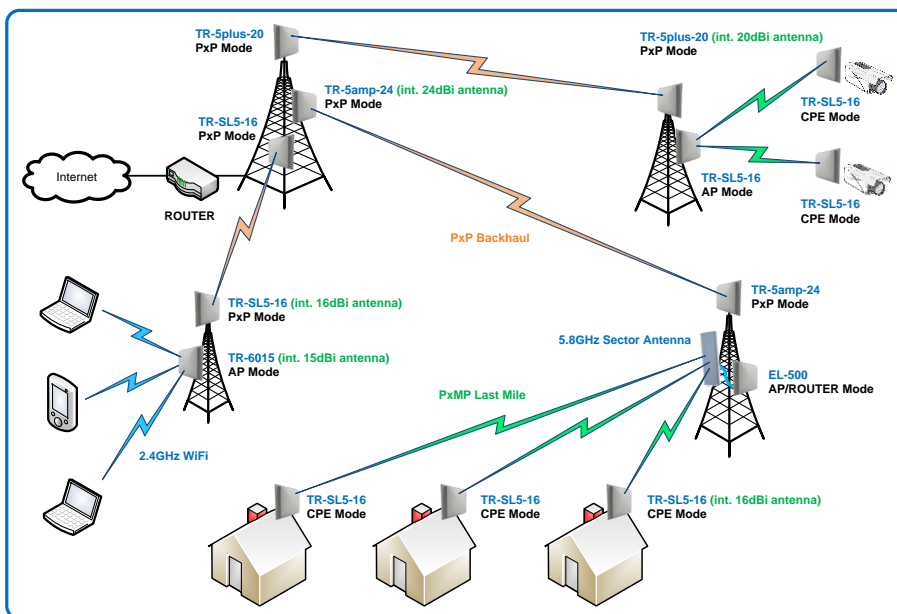
Applications

- Remote Data Acquisition
- Internet Service
- Video Transmission
- Security and Surveillance
- Private Networks
- WiFi Hot Spots



Key Features

- IEEE 802.11a Compliant
- AP/PxP/CPE Modes
- Up to +13dBm Transmit Power with Adjustable Output
- 5.5W Solar Friendly Power Draw
- 5/10/20MHz Channels Selectable
- Bandwidth Throttling
- Built-in StreamEngine™ QoS
- WEP/WPA/WPA2 Security
- TCP/IP, UDP, TFTP, SNMP v2c
- NAT, PPPoE, VPN Pass-through
- Integrated 16dBi Panel Antenna
- Daylight Visible Alignment LED's for Quick Deployment
- Power-over-Ethernet (POE)
- Web-based Management Tools
- Remote Firmware Upgrade
- Weatherproof Enclosure



About Tranzeo Wireless Technologies™

Tranzeo Wireless Technologies Inc. (TSX:TZT) leads the wireless broadband industry for value, by producing high-performance wireless network equipment with a low cost of ownership and unparalleled service allowing communities and businesses to communicate without boundaries. Since the company's inception in 2000, Tranzeo's optimum cost effectiveness, premium quality and responsive support have attracted a growing number of devoted dealers and distributors worldwide.

Tranzeo Wireless Technologies Inc.

19473 Fraser Way, Pitt Meadows, BC, Canada V3Y 2V4 • T: 604.460.6002 • F: 604.460.6005 • Toll Free: 1.866.872.6936 • www.tranzeo.com

Radio Interface					
Standards	IEEE 802.11a				
Frequency Range	5170 – 5875 MHz				
Channel Bandwidths	5MHz, 10MHz, 20MHz Selectable				
Radio Mode	Access Point (AP), Point-to-Point (P×P), Customer Premise Equipment (CPE)				
Transmit Power	+13 dBm (max) with Adjustable Output				
Receiver Sensitivity	-73dBm @ 54 Mbps, -85dBm @ 6 Mbps				
Data Rate & Modulation	48/54 Mbps QAM-64, 24/36 Mbps QAM-16, 12/18 Mbps QPSK, 6/9 Mbps BPSK				
Receive Signal Strength	Noise and Receive Signal Levels (dBm) and Daylight Visible Alignment LED's				
Internal Antenna Polarization	Horizontal or Vertical				
Antenna Options and Model Information					
Model No. ⁽¹⁾	Type	Wind Load (N)		Beamwidth	
		100 mph	125 mph	Horizontal	Vertical
TR-SL5-Nf/W	N-Female Connector	72	122	N/A	N/A
TR-SL5-16f/W	16 dBi Panel (internal)	72	122	17°	18°
Networking and Management					
Device Management	Cross-Platform Utility, Web-Based Management, Remote Configuration and Firmware Upgrades (via IP), TFTP, SNMP v2c (MIB-II, 802.11 MIB, Tranzeo MIB), Import/Export/Save Settings Profiles				
Protocols	TCP/IP, UDP, NAT, DHCP Client/Server, PPPoE, WDS, VPN Pass-Through, Multiple MAC Bridging				
Quality of Service (QoS)	StreamEngine™ QoS				
Bandwidth Management	Bandwidth Throttling (Bridge and Router Modes)				
Security	40/64-bit and 128-bit WEP Encryption, WPA/WPA2 (TKIP/AES), MAC address filtering, Management VLAN				
Ethernet	1 x 10/100Base-T (Water-Tight RJ-45)				
Max DHCP Clients	10				
Power Supply					
Power Consumption	5.5 Watts (max)				
Power Supply	Power over Ethernet (PoE)				
DC Adapter	18VDC/1.1A (INPUT: 120-240VAC~ 50-60Hz, 0.6A) f-Model: Fixed UL Plug (US only) W-Model: Snap-In Plugs for US, UK, and EU included				
Mechanical and Environmental					
Radio Dimensions	10.38" x 8.63" x 3.00" (26.4cm x 21.9cm x 7.6cm)				
Radio Weight	1.75 lbs (0.8 Kg)				
Installation Hardware	PoE Injector with Built-in Surge Protection, DC Adapter, Ethernet Boot Cover with Weatherproof Gasket, L-Bracket with KEP Nuts and U-Bolt for Pole Mount				
Environmental Rating	IP67 and NEMA Type 4X				
Operating Temperature	-65°C to +60°C				
Storage Temperature	-40°C to +85°C				
Compliance and Warranty					
Export Control	HTC 8517.69.0000, ECCN 5A002 ENC, ECL 1-5.A.2.A.1				
Compliance & Approvals	RoHS, FCC Part 15 Class B, Industry Canada, CE!, EMC: EN 301 489, Safety: EN 60950, Radio: EN 302 213				
DFS Modes	Ofcom (UK), ETSI, FCC, Industry Canada				
Warranty	5-Year Parts / 3-Year Parts and Labour ⁽²⁾				

⁽¹⁾ f: FCC Model (for use in the USA only), W: World Model (subject to local regulatory requirements) ⁽²⁾ 1-Year Parts and Labour warranty for products built before December 1, 2006, and 3-Year Parts and Labour warranty for products built after December 1, 2006 and before December 31, 2007. Specifications are subject to change without notice. StreamEngine is a trademark of Ubicom. Tranzeo and the Tranzeo logo are registered trademarks of Tranzeo Wireless Technologies Inc.