



## Pacific Wireless

693 E Draper Heights Way Suite 210  
Draper, UT 84020  
TEL (801) 572-3024  
FAX (801) 572-3025  
www.pacwireless.com

# PAWVA24-16

## DATA SHEET

### Vagi Series Antenna

## 2400 to 2485 MHz Operation

### Features

- Compact, Low Profile 16 dBi Antenna Gain
- Low Cost compared to other 16dBi Gain Antennas
- Very Low Wind Loading. Aesthetic design
- QuikClamp Bracket for 1.0” to 1.5” Pole Diameter
- 45 Deg tilt and 360 Deg rotation adjustments
- Vertical or Horizontal Polarization
- 24” Pigtail with N Male Connector
- Rugged, Lightweight and Waterproof
- Frequency Options Available between 1700 and 2700 Mhz



\*16dBi Directional Vagi Antenna – Horizontal

### Applications

- 2.4 GHz ISM Band Applications
- WISP CPE Equipment
- Point to Multi-point Systems
- Wireless Broadband Systems
- Wireless Internet Access
- Building to building high speed links

### Description

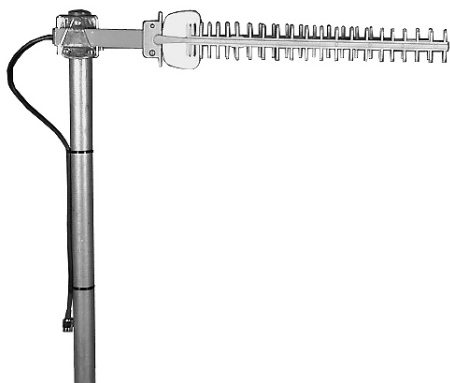
The Vagi Series antenna system offered by Pacific Wireless is constructed of Die Cast Aluminum Alloy with anti-corrosion alodine finish. They come standard with a choice of an N Female or N Male connector and an adjustable 45 Deg Tilt galvanized steel QuikClamp bracket which accommodates a 1” to 1.5” pole diameter. The Vagi Series antenna can be used in a wide variety of wireless systems where low cost, good performance and low wind loading are important factors. Because of their low visual impact, they have been approved for use by many homeowner associations with strict CC&R restrictions. Various frequency options are available between 1700 and 2700 MHz (Contact Pacific Wireless for different frequency or connector options).

### Specifications

Parameter	Model	Min	Typ	Max	Units
<i>Frequency Range</i>	VA24-16	2400		2485	MHz
<i>Input Return Loss (S<sub>11</sub>)</i>			-14		dB
<i>VSWR</i>			1.5:1		
<i>Impedance</i>			50		OHM
<i>Input Power</i>			50		W
<i>Pole Diameter (OD)</i>		1 25		1.5 38	inch mm
<i>Operating Temperature</i>		-45		+70	Deg C

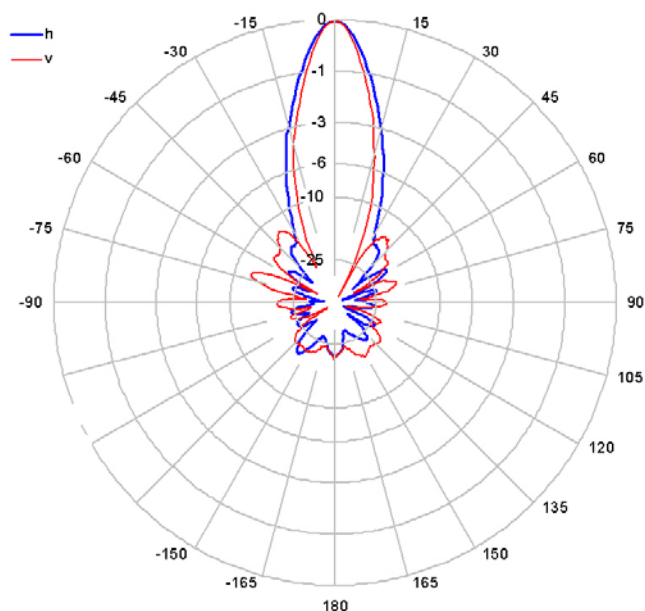
\*Note: Pacific Wireless does not supply the mounting pole

2400 - 2485 MHZ	VA24-16
<b>Gain</b>	16dB
<b>3db Beam Angle (E-Plane) Vertical Polarity</b>	25 deg
<b>3dB Beam Angle (H-Plane) Horizontal Polarity</b>	30 deg
<b>Front to Back</b>	> 19dB
<b>Rated Wind Velocity</b>	125mph (56m/sec)
<b>Weight</b>	1.5 Lbs (0.56 Kg)
<b>Dimension L x W x H</b>	22" x 3" x 4" (559 x 76 x 102mm)



16dBi VAGI Shown in Vertical Polarization

### Antenna Patterns at 2.45GHz



**Notes:**

- All shipments F.O.B. Bluffdale, UT 84065
- All antennas carry a 2 Year Warranty

**System Ordering:**

VA24-16 16dBi Vagi Series 2.4GHz Antenna with N Male Connector

VA24-16F 16dBi Vagi Series 2.4GHz Antenna with N Female Connector

**For further information contact:**



**Pacific Wireless**  
 693 E Draper Heights Way Suite 210  
 Draper, UT 84020  
 TEL (801) 572-3024  
 FAX (801) 572-3025  
 www.pacwireless.com